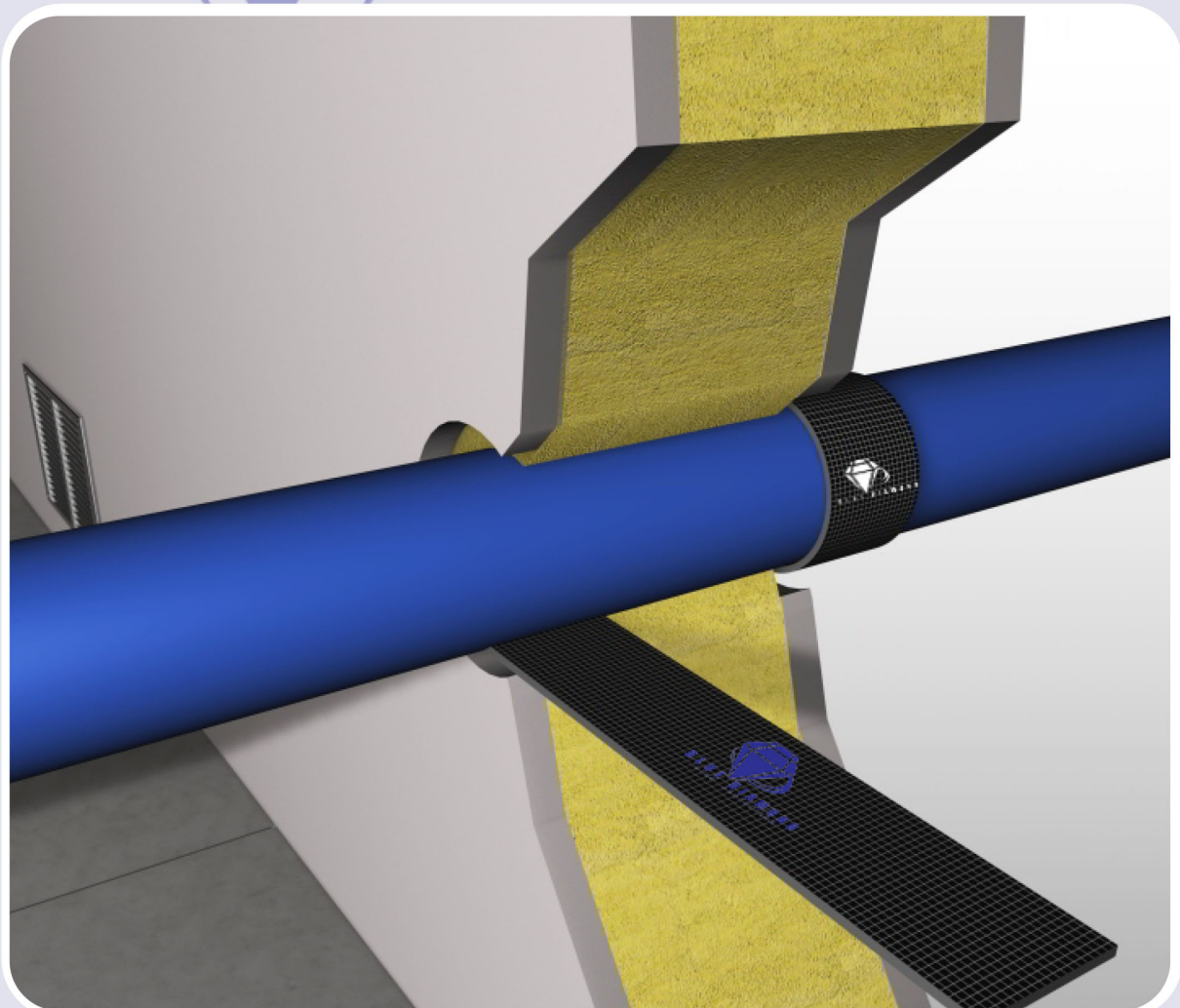


Scan the QR
to download
a copy



Wraps - BD-W15



Wraps BD-W15



Product name	Wraps -BD-W15
Product Code	BD-W15
Revision Date	30/01/2016
Revision number	04



INTRODUCTION

Wraps is an intumescent material, based on elastomeric thermoplastic polymers combined with active components wrapped in a roll at a length of 25mtrs, that provides high a volume expansion and pressure seal in the event of a fire. As plastics soften or insulation burns away in the heating condition of the fire, PipeBloc EL expands to close off the void left by the pipe or insulation. Compatible pipes and insulation (see tables) are tested to a size of 200mm in diameter through flexible walls and rigid floors and walls, and for use alongside the FSi range of products. The product is tested to EN 1366-3: 2009 and classified to EN 13501-2 giving a fire resistance classification of EI 120.

The pipes tested include PVC, HDPE, PP and PE from sizes 32mm upto 200mm diameter pipes through rigid / flexible walls and rigid floors.

The advantages of the Wraps -BD-W15 as follows

- Fire resistance testing to EN 1366-3: 2009
- Classified as EI 120 using EN 13501-2
- Certifire 3rd Party Accreditation CF 5369
- Fire resistance tested in flexible walls and rigid floors and Suitable for wall and floor installation
- PipeBloc® EL wrap gives the users versatility when installing in a multitude of common site conditions, PipeBloc® EL is supplied in a convenient 25m long, 40mm wide roll.
- Can be use with Plastic Pipes - PVC, HDPE, PP, PE, ABS, PVC-C and SAN + PVC
- Can be used to close off various types of insulation around mettalic pipes
- Causes no known effects to plastic pipes
- Contributes to Green Building
- Shelf Life N/A
- The product is based on an thermoplastic composite and is therefore non-toxic
- Halogen free, contains no asbestos, ceramic, mineral fibres and is enviromentally friendly
- Not affexted by fungus, vermin or rodents
- Conditioned to Type X: -20oC to +70oC with accordance with EOTR 024 and Etag 026



 **SPECIFICATION**

Pipe Diameter	32mm, 40mm, 50mm, 55mm, 63mm, 75mm, 82mm, 90mm, 100mm, 110mm, 125mm, 140mm, 160mm and 200mm
Plastic types	PVC-U, PVC-C, ABS, SAN + PVC, PE-HD, PE, PP
Width (Nominal)	40mm
Thickness (Nominal)	2mm at 32mm upto 10mm at 200mm
Density	Approximately 1.2 g/cm ³
Volume Expansion at 450°C	Approximately 25 times
Fire Resistance	Up to EI 120 in accordance with EN 1366-3: 2009 and EN 13501-2

 **INSTALLATION**

Installation details and technical support are available from Blue Diamond technical department or at www.bluediamondfireprotection.com

- Place pipe wraps around the pipe or insulation and secure with adhesive tape. See TDS or table below for correct installation details.
- Adjust the position of each wrap so that the outer edge of the wraps are flush with either side or floor or wall.
- Seal over with Pyrocoustic® Sealant.
- Maintain a record of installation

For further information see Installation Manual.

Pipebloc EL Wrap Configuration for up to 120mins		
Outer Pipe Dia mm	No. Wraps	Thickness
40	1	2
55	2	4
63	2	4
75	2	4
82	2	4
90	3	6
110	3	6
125	4	8
160	4	8
200	5	10

Pipebloc EL Wrap Configuration for Metallic pipes wrapped with various insulation types for up to 120 mins		
Insulation Type	No. Wraps	Thickness
Phenolic Foam	2	4
Elastomeric Foam	2	4
Glass Wool	2	4
Stone Wool	2	4

*PLEASE SEE PIPEBLOC PWP TDS FOR MORE INFORMATION ON PIPE TEST RESULTS





COMPLIANCE

The Pipebloc EL are manufactured in the EU, meeting the highest quality standard in compliance with BS EN ISO 9001:2008. For fire test certification contact Blue Diamond technical department. CERTIFIRE No. CF 5368



STORAGE AND DISPOSAL

Pipebloc EL is may not be affected by an outdoor environment. However, for long term storage and ease of installation it is recommended that it should be stored indoors, ideally in dry conditions. Ideal storage temperature between -5°C and +30°C. For health and safety details refer to Blue Diamond technical department.



ENVIRONMENT

Blue Diamond contribute to Green Building by having a manufacturing policy of 100% recycle and 0% landfill for all products. Pipebloc EL contributes to a Green Building :-

Low VOC (air quality).

No Power Tools required for installation (no energy source required).

Dust free.

Low Ozone Depletion Potential (ODP).

Low Global Warming Potential (GWP).

Smoke and Air Tightness.

Noise Reduction.

Thermal Insulation.

Recycling of Packaging.

Avoidance of Air Filtration.

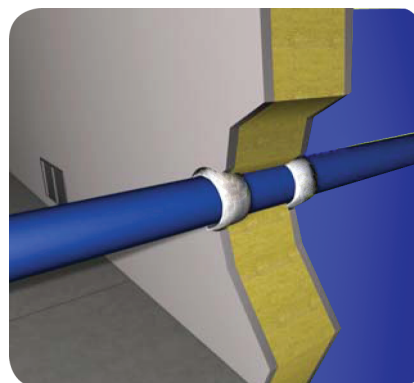
Core being manufactured in accordance with ISO14001.

The life cycle of Pipebloc EL is over 10 years.



Wraps

BD-W15



Product name	Wraps -BD-W15
Product Code	BD-W15
Revision Date	30/01/2016
Revision number	01

Section 1: Identification of the substance/mixture and of the company / undertaking



1.1 Product identifier

Product name	Wraps -BD-W15
Product Code	BD-W15



1.2. Relevant identified uses of the substance or mixture and uses advised against



1.3. Details of the supplier of the safety data sheet

Company Name	Blue Diamond Fire Protection Al Quoz -1 P.O.Box: 25468 Dubai - UAE
Tel	(00971) 4 340 3700
Fax	(00971) 4 340 5122
Email	bluedbc@eim.ae



1.4. Emergency telephone number

Section 2: Classification of the substance or mixture



2.1. Classification of the substance or mixture

Classification under CLP	This product has no classification under CLP
--------------------------	--



2.2. Label elements

Label elements	This product has no label elements
----------------	------------------------------------



2.3. Other hazards

PBT | This product is not identified as a PBT/vPvB substance

Section 3 Composition/information on ingredients



3.2. Mixtures

Section 4: First aid measures



4.1. Description of first aid measures

Skin contact	Wash immediately with plenty of soap and water
Eye contact	Bathe the eye with running water for 15 minutes
Ingestion	Wash out mouth with water
Inhalation	Consult a doctor



4.2. Most important symptoms and effects, both acute and delayed

Skin contact	There may be mild irritation at the site of contact
Eye contact	There may be irritation and redness
Ingestion	There may be irritation of the throat
Inhalation	There may be irritation of the throat with a feeling of tightness in the chest



4.3. Indication of any immediate medical attention and special treatment needed

Immediate/special treatment | Not applicable

Section 5: Fire-Fighting measures



5.1. Extinguishing media

Extinguishing Media | Suitable extinguishing media for the surrounding fire should be used



5.2. Special hazards arising from the substance or mixture

Exposure hazards | In combustion emits toxic fumes



5.3. Advice for fire-fighters

Advice for fire-fighters | Wear self-contained breathing apparatus. Wear protective clothing to prevent contact with skin and eyes

Section 6: Accidental release measures



6.1. Personal precautions, protective equipment and emergency procedures

Personal precautions | Refer to section 8 of SDS for personal protection details



6.2. Environmental precautions

Environmental | Do not discharge into drains or rivers



6.3. Methods and materials for containment and cleaning up

Clean-up procedures | Wash the spillage site with large amounts of water



6.4. Reference to other sections

Reference to other sections | Refer to section 8 of SDS

Section 7: Handling and storage



7.1. Precautions for safe handling

Handling requirements | Avoid the formation or spread of dust in the air



7.2. Conditions for safe storage, including any incompatibilities

Storage conditions | Store in a cool, well ventilated area



7.3. Specific end use(s)

Specific end use(s) | No data available

Section 8: Control parameters



8.1. Control parameters

Workplace exposure limits | No data available



8.1. DNEL/PNEC

DNEL/PNEC	No data available
------------------	-------------------



8.2. Exposure controls

Respiratory protection	Respiratory protective device with particle filter
Hand protection	Protective gloves
Eye protection	Safety glasses. Ensure eye bath is to hand
Skin protection	Protective clothing

Section 9: Physical and chemical properties



9.1. Information on basic physical and chemical properties

State	Solid
Odour	Dark grey



9.2. Other information

Other information	No data available
--------------------------	-------------------

Section 10: Stability and reactivity



10.1. Reactivity

Reactivity	Stable under recommended transport or storage conditions
-------------------	--



10.2. Chemical stability

Chemical stability	Stable under normal conditions
---------------------------	--------------------------------



10.3. Possibility of hazardous reactions

Hazardous reactions	Hazardous reactions will not occur under normal transport or storage conditions. Decomposition may occur on exposure to conditions or materials listed below
----------------------------	---



10.4. Conditions to avoid

Conditions to avoid	Heat
----------------------------	------



10.5. Incompatible materials

Materials to avoid | Strong oxidising agents. Strong acids



10.6. Hazardous decomposition products

Haz. decomp. products | In combustion emits toxic fumes

Section 11: Toxicological information



11.1. Information on toxicological effects

Toxicity values | No data available



Symptoms/routes of exposure

Skin contact | There may be mild irritation at the site of contact

Eye contact | There may be irritation and redness

Ingestion | There may be irritation of the throat

Inhalation | There may be irritation of the throat with a feeling of tightness in the chest

Section 12: Ecological information



12.1. Toxicity

Ecotoxicity values | No data available



12.2. Persistence and degradability

Persistence and degradability | Biodegradable



12.3. Bioaccumulative potential

Bioaccumulative potential | No bioaccumulation potential



12.4. Mobility in soil



12.5. Results of PBT and vPvB assessment

PBT identification | This product is not identified as a PBT/vPvB substance



12.6. Other adverse effects

Other adverse effects | Negligible ecotoxicity

Section 13: Disposal considerations



13.1. Waste treatment methods

NB | The user's attention is drawn to the possible existence of regional or national regulations regarding disposal

Section 14: Transport information

Transport class | This product does not require a classification for transport

Section 15: Regulatory information



15.1. Safety, health and environmental regulations/legislation specific for the substance or mixture

Specific regulations | Not applicable



15.2. Chemical Safety Assessment

Section 16: Other information



Other information

Other information | This safety data sheet is prepared in accordance with Commission Regulation (EU) No 453/2010.

* indicates text in the SDS which has changed since the last revision.

Legal disclaimer | The above information is believed to be correct but does not purport to be all inclusive and shall be used only as a guide. This company shall not be held liable for any damage resulting from handling or from contact with the above product.

Wraps BD-W15



Product name	Wraps -BD-W15
Product Code	BD-W15
Revision Date	30/01/2016
Revision number	02



INTRODUCTION

The purpose of this document is to give guidance to approved contractors and suppliers who are engaged in the fire stopping of service penetrations in walls and floors using the Pipebloc EL System.

All service holes through floors and compartment walls must be fire stopped to prevent the passage of fire, smoke and hot gases.

The result of this work will: -

- Prevent the spread of fire, smoke and hot gases through a building by containing it in the compartment of origin.
- Maintain the integrity of escape routes from a building.
- Reduce loss or damage to property from the effect of fire and smoke.
- Maintain pressure differential between compartments and ventilation channels.











TRAINING

Blue Diamond support Third party installer certification, all operatives to be engaged in the installation of Pipebloc EL must have read and fully understood product documentation from Blue Diamond. All installation work must be carried out in accordance with the guidelines laid down in this document.

Training facilities are provided by Blue Diamond Technical Department to ensure the correct installation procedures are followed to the approved Pipebloc EL specification, also to maintain a high standard of workmanship and quality.



TOOLS AND EQUIPMENT

	Steel Tape Measure - 2 Metre minimum
	Cartridge Gun
	Carpenter's Pencil & Straight Edge
	Masking Tape
	All Purpose Saw
	Hand Brush & Dust Pan
	Bread Knife
	Plastic Sheeting
	Float
	Pallet Knife



PREPARATION FOR INSTALLATION

Ensure that all service penetrations are complete and installed and approved to the satisfaction of the main contractor/client.

Remove all unnecessary combustible materials from the opening. Using a dust pan and brush, sweep all loose products from the inner surface of the opening and surrounding local to the installation.

Place a plastic sheet beneath the working area to catch any falling materials.

If necessary remove any insulation or lagging from air ventilation ducts and pipes to ensure a good seal with the Pipebloc EL System.

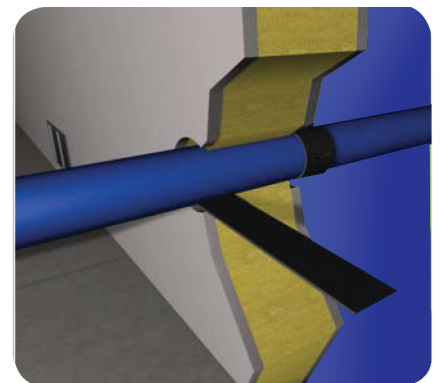
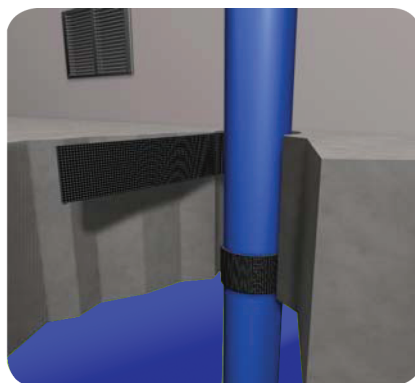
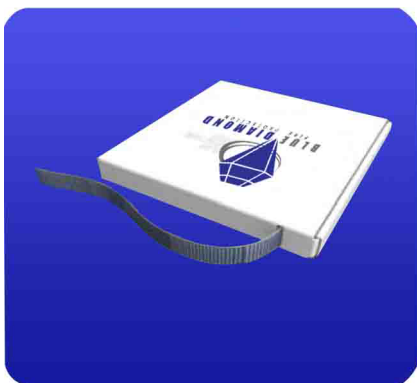


INSTALLATION OF PIPEBLOC PWP

- Make sure that you have cleaned the substrate ready for use
- Once the substrate is clean wrap the Pipebloc EL around the pipe the required times (see table below)
- Install the wrap into the wall leaving 5mm from the edge
- Make sure that 2 wrap is used in the installation sealing both sides
- Fill the annular gap with Pyrocoustic Sealant to seal off the 5mm up to the eadge of the substrate
- Maintain an record of installation

Pipebloc EL Wrap Configuration for up to 120mins		
Outer Pipe Dia mm	No. Wraps	Thickness
40	1	2
55	2	4
63	2	4
75	2	4
82	2	4
90	3	6
110	3	6
125	4	8
160	4	8
200	5	10

Pipebloc EL Wrap Configuration for Metallic pipes wrapped with various insulation types for up to 120 mins		
Insulation Type	No. Wraps	Thickness
Phenolic Foam	2	4
Elastomeric Foam	2	4
Glass Wool	2	4
Stone Wool	2	4





BLUE DIAMOND
FIRE PROTECTION

www.bluediamondfireprotection.com
Blue Diamond Fire Protection
Al Quoz -1, P.O.Box: 25468
Dubai - UAE

Tel: +971 4 340 3700
Fax: +971 4 340 5122
Email: bluedbc@eim.ae